

# **LinkMotion and Adobe Illustrator CS4:**

After you install LinkMotion software and setup all settings make sure to select landscape or portrait mode ( this is dependent on your machine's table size) and then launch Illustrator software.

## **Important notes:**

**Zero or thinnest line width and No fill are the most important things to remember when you are designing a file for Vector output. Do not fill the shape for any vector output. Raster will have the fills and it is used mostly for the laser output.**

**Solustan tests the primary function of accepting hair lines (vector lines) from the third party application software to make the vector moves on the machine using LinkMotion driver. Solustan may test additional functions. However, it is not a detailed testing. The developer and marketer of the third party software make changes to their applications quite often. It is the responsibility of the user to make sure that the necessary functions are available while making the choice of off-the-shelf application software.**

**Solustan's liability is limited to the purchase price of the LinkMotion driver software.**

It is necessary for the user to own the application that will be used for the job design. There are many books of various levels available for all these popular applications. This document is simply a guideline to point the user in the right direction. We welcome feedback from our users. Share your findings with us and we will include them here for all users benefit.

## **(1) How to do all basic settings in Illustrator?**

**Line width of .07 Pt, .06 Pt and as low as .01 Pt and No fill are the most important things to remember when you are designing a file for Vector output. Do not fill the shape for any vector output. Raster will have the fills and it is used mostly for the laser output. (We have not done testing for raster work)**

Illustrator allows you to setup any page size. You can set that up by clicking on the File menu and then Document Setup sub-menu. In AI the Artboard is referred as the Document Size to control the size of the table. Illustrator allows maximum page size to be 227.5". Make sure to design the page size either the same or smaller for your machine. Also remember to make the page size in proportion to the table size declared for it to be consistent as far as portrait and landscape modes are concerned. Once the design is done with no fill and .01Pt line thickness click on the print command. In print dialog box following settings are necessary.

**Printer:** Select the printer you have installed. This is the machine name you selected when you installed LinkMotion driver software. My Machine-USB for LinkMotion USB product or Roland GX 24 for LinkMotion Vinyl product is an example what machine name you can select.

## Media

**Size:** Define by Driver should be selected.

**Width and Height** are grayed out and you cannot change them. This is shown from the Machines table size from Machine setup area of LinkMotion (Maximum travel for X and Y axis) or in case of vinyl cutting it is material length (Xaxis) and width (Yaxis).

Next to Width and Height you will see the symbols for printing position. Make sure to select **Portrait or Landscape** mode depending on the machine's table size you have declared.

## Options

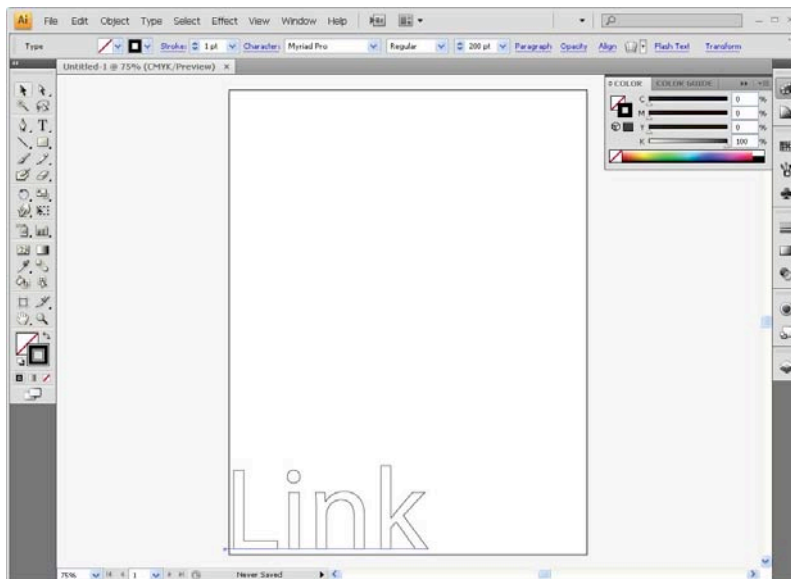
Here most of the time center should be selected if design page size is same as your machine's table size. Bottom right should be selected to minimize the travel if page size is smaller then the table size. Also remember to make the page size in proportion to the table size declared for it to be consistent as far as portrait and landscape mode are concerned. Experiment with other positions before cutting the final vinyl or other material that you are using with your machines.

## Print

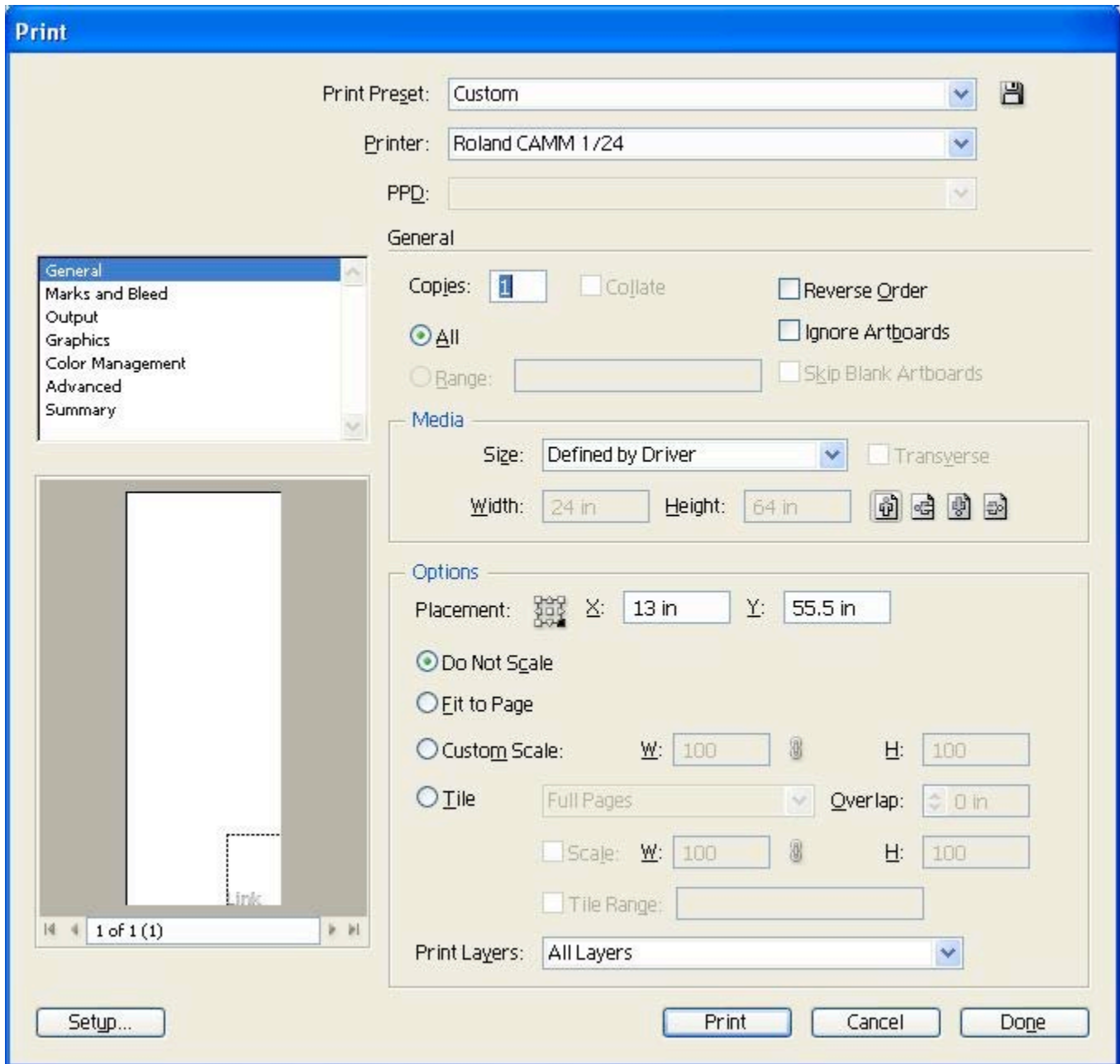
When final print is selected illustrator respects where it will output in relation to your page design. If your design shape is .5" away from x and y direction it will also output that far away from the starting position. If your shapes are designed all the way at the beginning of the page then it will output in that location.

## (2) How to use Illustrator CS4 with proper output print commands with LinkMotion for Vinyl cutting?

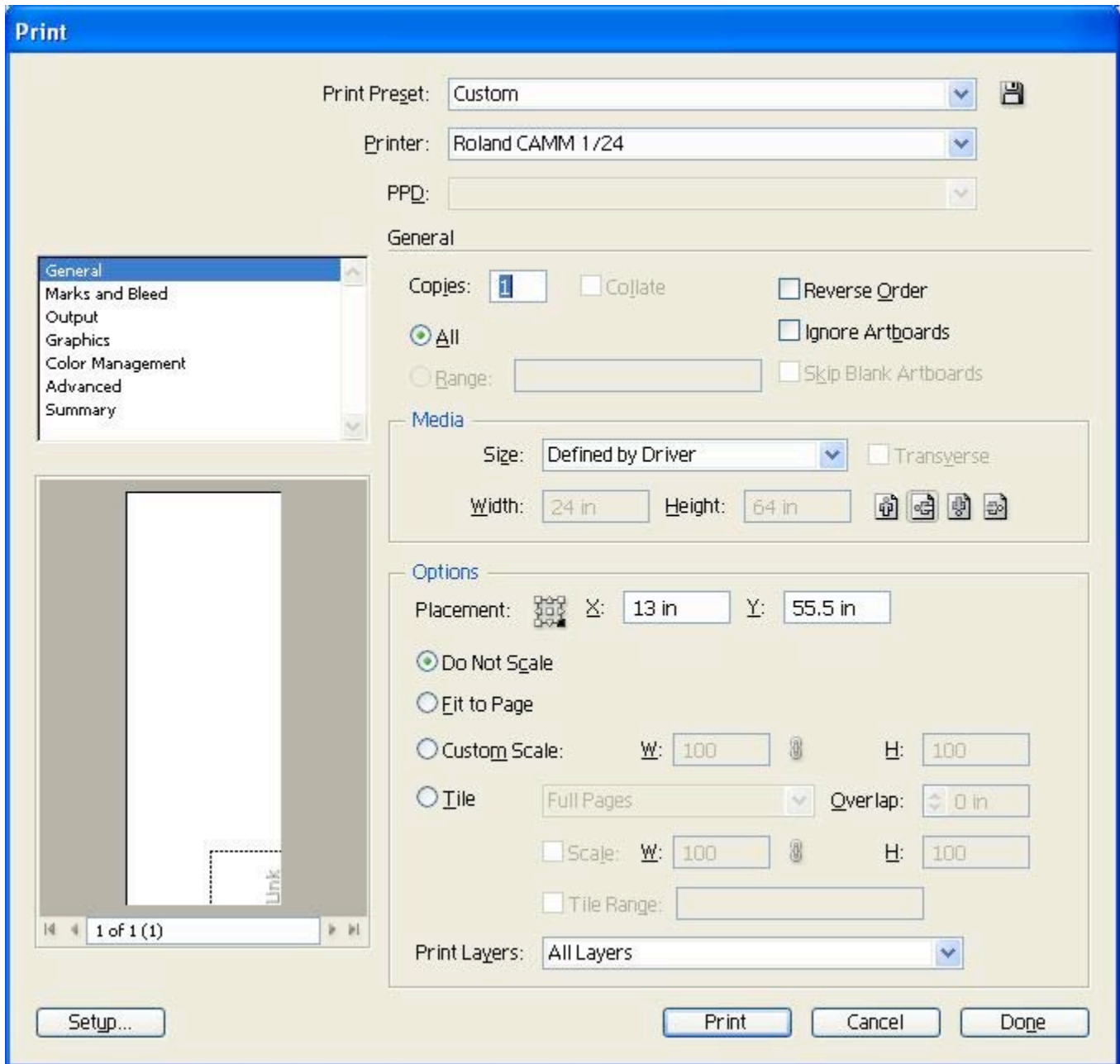
Following is a Vinyl cutting example and can explain how the job is designed and where it will output working with LinkMotion for Vinyl.



Print command with Portrait position is shown below.



Print command with Landscape position is shown below.

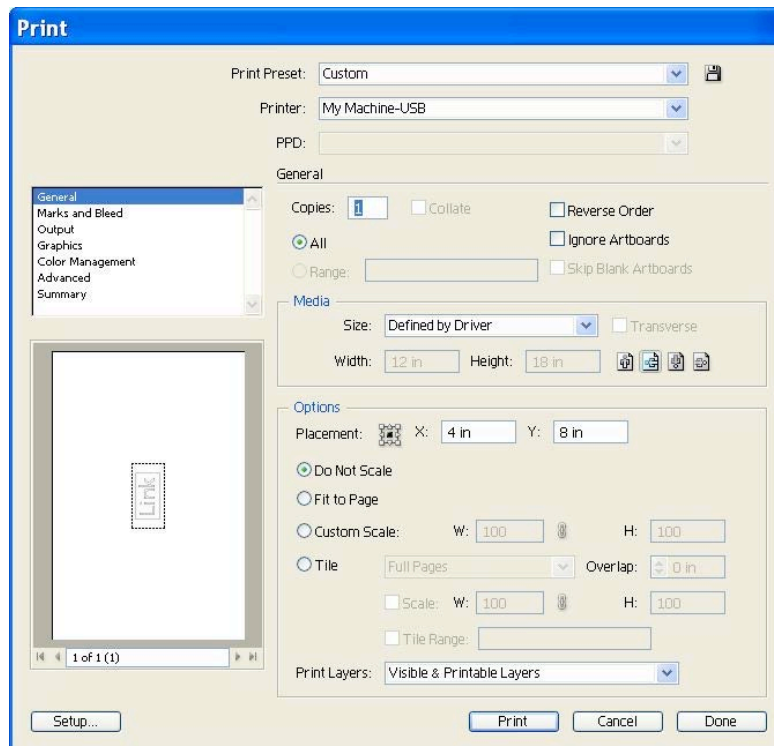


### (3) How to use Illustrator CS4 with proper output print commands with LinkMotion for USB controller with Design using a material size?

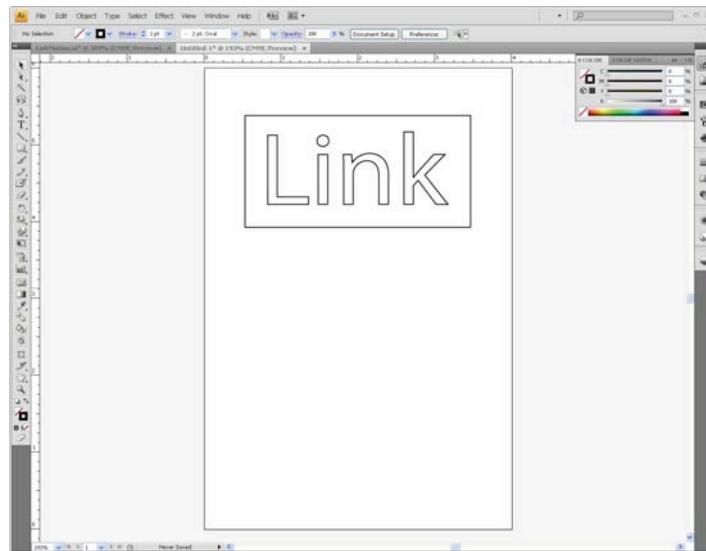
If your machine table size has X axis maximum travel larger than Y axis maximum travel then you need to select Plate width larger than the plate height. Make sure to select landscape mode for the output and Print without changing anything. Placement should be center. Following example shows your settings.



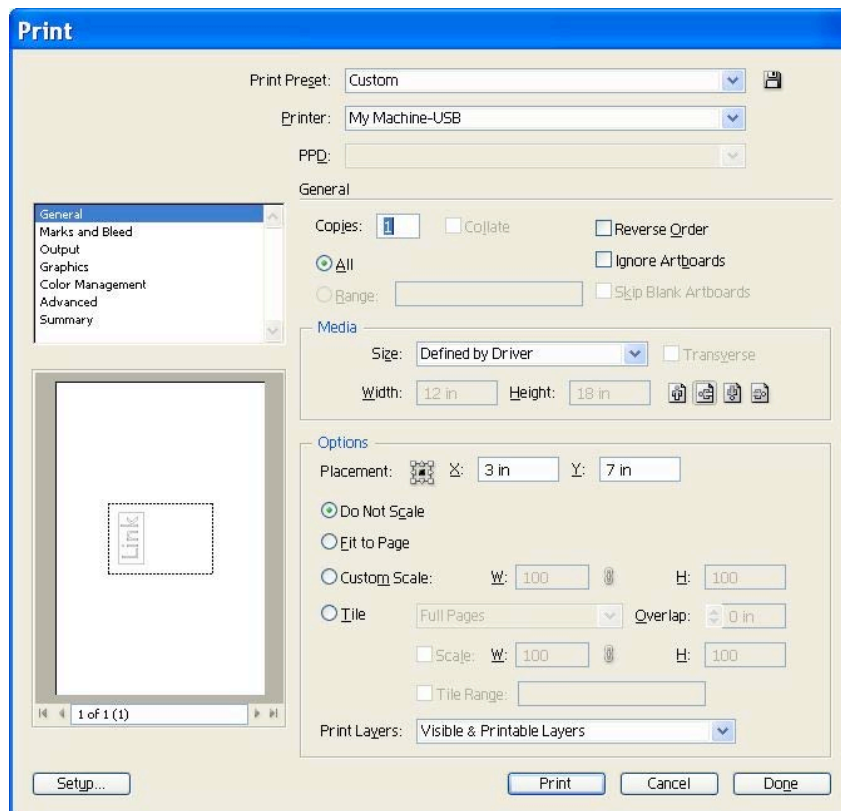
Above plate size is 4” wide and 2” height and picture below shows the print settings in Illustrator.



If you design plate size width smaller then the Height you can select landscape mode for the output in print dialog box. Example shown below has plate width 4” and height is 6”.



Now following example shows the print settings.



# LinkMotion and Adobe Illustrator CS2:

After you install LinkMotion software and setup all settings launch Illustrator software.

## Important notes:

**Zero or thinnest line width and No fill are the most important things to remember when you are designing a file for Vector output. Do not fill the shape for any vector output.**

**Raster will have the fills and it is used mostly for the laser output.**

**Solustan tests the primary function of accepting hair lines (vector lines) from the third party application software to make the vector moves on the machine using LinkMotion driver. Solustan may test additional functions. However, it is not a detailed testing. The developer and marketer of the third party software make changes to their applications quite often. It is the responsibility of the user to make sure that the necessary functions are available while making the choice of off-the-shelf application software.**

**Solustan's liability is limited to the purchase price of the LinkMotion driver software.**

It is necessary for the user to own the application that will be used for the job design. There are many books of various levels available for all these popular applications. This document is simply a guideline to point the user in the right direction. We welcome feedback from our users. Share your findings with us and we will include them here for all users benefit.

## (1) How to do basic settings in Illustrator?

**.01 Pt. Or .0001 IN Size line width and No fill are the most important things to remember when you are designing a file for Vector output. Do not fill the shape for any vector output.**

**Raster will have the fills and it is used mostly for the laser output. (We have not done testing for raster work)**

The document size corresponds to the Table size. Illustrator allows you to setup any page size. You can set that up by clicking on the File menu and then Document Setup sub-menu. In AI the Artboard is referred as the Document Size to control the table dimension. Most of the time you will be using Custom as your table size. **Illustrator has problem with orientation in print dialog box** if width of the page is greater than the height. For example your machine table is 20x10. You design your page size to be 20x10. It automatically changes orientation to be sideways. However machine dimensions remain to be 10x20. As a result your **job does not output properly.**

## (2) What we recommend?

For 20x10 table change your table size to be 20x21. In Illustrator set the page size to be 20x21. Now remember to place your artwork within 20x10 area of the page only. This 20x10 area can be at the top or the bottom depending on your machine's starting position. Also in the **Print** dialog box select **Setup**.

Now you will see the **Placement** Area on the right. Here make the selection of positioning of the artwork. Select **top left** if your machine's start position is Top left. Similarly select bottom left if your machine's start position is bottom left.

Use 0.01 Pt. Size line weight for strokes and no fill for any drawn objects to avoid repeated tool movements.

All vector lines have to be **.01 Pt. Or .0001 IN Size stroke** width for proper output. Text also should be **.01 Pt. Or .0001 IN Size stroke** width and no fill. **Do not use any filled object.**

**Color support does not work properly.**

I had three rectangles. First black, second red, third green. In LinkMotion we had selected job feed rate to be 2in. Color selection output were following: Black at 100%, Red at 50% and Green at 20%. Actual output was following: Black at 50%, Red at 100% and Green at 100%.

## **(2) How to create a dot and drill the hole?**

Draw a circle with .001" diameter (X and Y dimensions should be the same) with **.01 Pt. Or .0001 IN Size stroke** width and no fill and when this small size circle is sent for the output you can use proper bit to create the hole.