

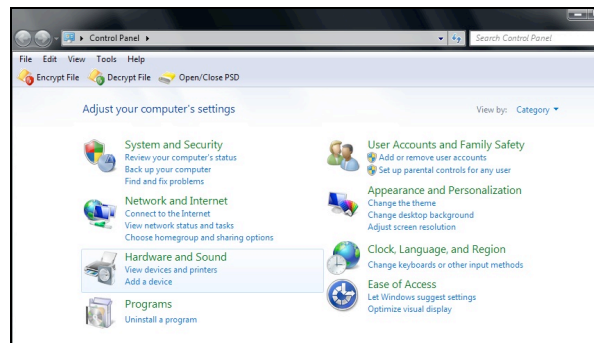
## **Install USB Controller Driver: (Use this for LinkMotion version 2.7 or higher)**

It is very important not to plug the cable from this USB controller card to any USB hub or extension devices. Always plug this directly into your computer's USB 2.0 connection. Section (A) is for Windows 7 and Section (B) is for Windows XP operating system.

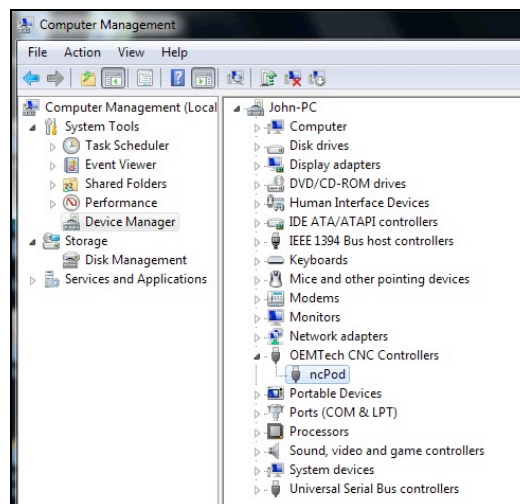
### **(A) Installing USB Controller driver for Win 7 32 or 64 bit operating System:**

**(1) When you plug USB cable to your computer's USB 2.0 compatible port and USB Controller board is attached it will be looking for the appropriate driver for this controller board into your windows. Following procedure will allow you to install this driver.**

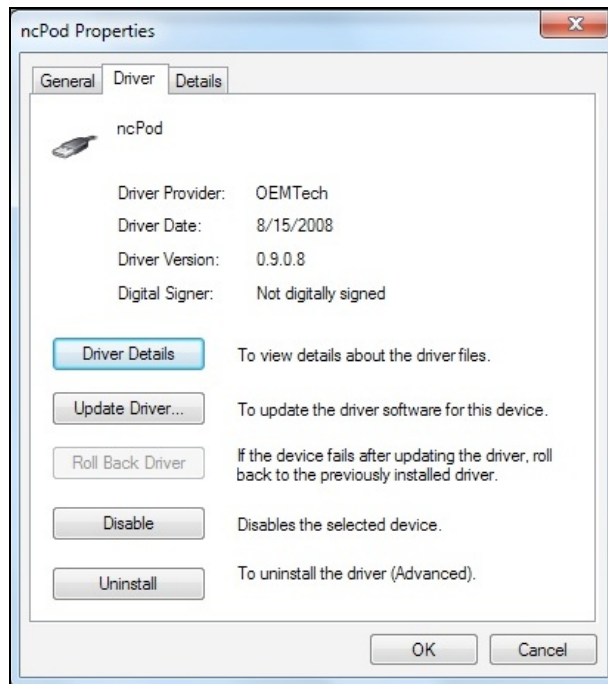
Go to the **Control Panel** from the **Start** button. Click on the **Hardware and Sounds**. Click on the **Device Manager** under **Devices and Printers**. You can also get there by



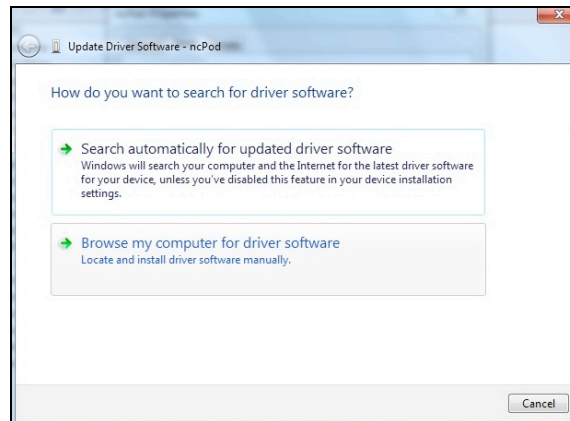
**(2) Select **Device Manager** on the left side. Click on the **OEMTech CNC controller** from the right. Click on the **ncPOD**.**



(3) Click on the Driver tab. Click the button for Update driver.



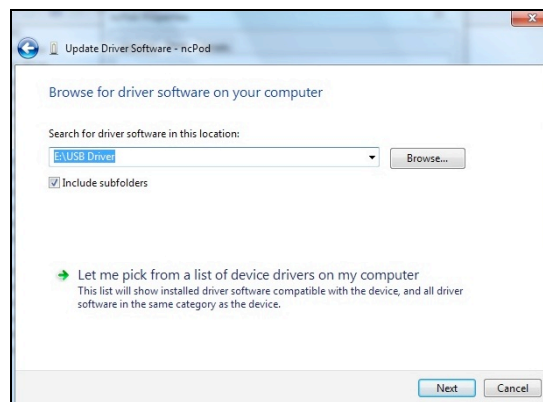
(4) You should see the following screen and make selection for **Browse my Computer for driver software**.



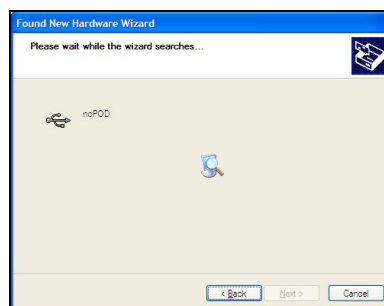
(5) Follow the path upto your CD drive where you can see a **USB Driver** folder or navigate to your hard drive or a USB Flash drive where you have downloaded this driver if it was sent to you using internet.



(6) Once you make selection where your **USB Driver folder** is and Click the **OK button**, it should show you the path for your selection.



(7) Click on the **next button** here and it should start installing the driver. It makes the selection automatically for your Windows operating system. For example if you have Windows XP or Winows 7 32 bit it will pick X86 driver and if you have Windows 7 64 bit it should pick X64 driver.



(8) Once it is done installing it should display a message in **General tab of ncPOD properties** that this driver is working properly.

(9) **Remember to plug in the SD memory card into the USB Controller card.** Approximately 1minute of machine work uses 1MB of memory. This controller supports up to 1GB Memory. **Do not use SDHC memory.**

(10) **Firmware update for USB controller board:**

**This procedure may be necessary only when we send you an updated firmware or updated LinkMotion driver software to work with latest firmware properly.**

Firmware update requires USB controller board connected to the computer. Double click on the utility name **USBControllerFirmwareUpdater 2034.exe** or with the latest number that we have provided. Click on the **big button Update Firmware 2034....** This will take a few seconds and when it is done updating it will give you a message **Update Successful**. Click on the **OK** button. You are done with the firmware update.

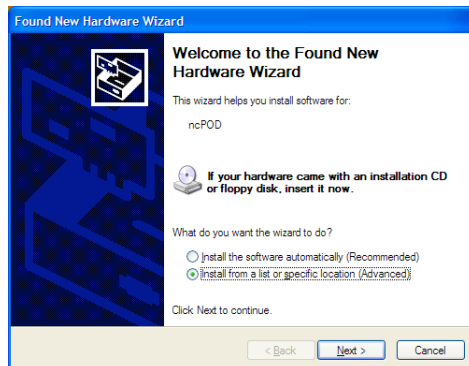
You may need to disconnect and connect back the USB cable from the computer end one time.

If you are simply updating the USB controller board firmware or updating the LinkMotion driver version then you will simply need to exit the LinkMotion applet by right mouse click and Re-Launch it from the Start menu and start working with it again.

## **(B) Installing USB Controller driver for Windows XP operating System:**

(1) **When you plug USB cable to your computer's USB 2.0 compatible port and USB Controller board is attached it will be looking for the appropriate driver for this controller board into your windows. It will give you a message at your bottom right "Found new hardware ncPOD".**

(2) **Next it will open Windows hardware wizard as shown on the picture below. This will help you install the appropriate driver. Select "Install from a list or specific location". Click on the Next button.**



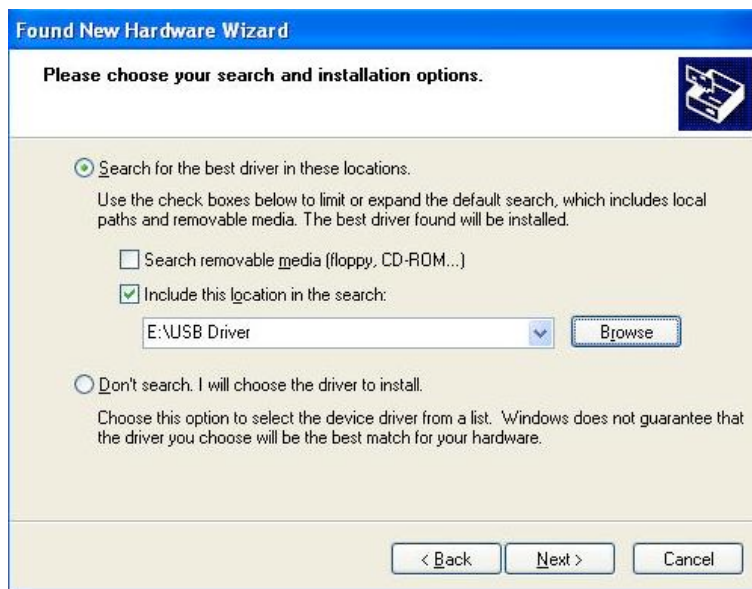
**(3) Here select as shown in the picture below Search for the best driver in these locations and **Include this location in the search** and with the **Browse button** make sure you see the path from your CD or the hard drive as following:**

Your CD drive if you are installing from the CD – **D:\USB Driver** or **E:\USB Driver**

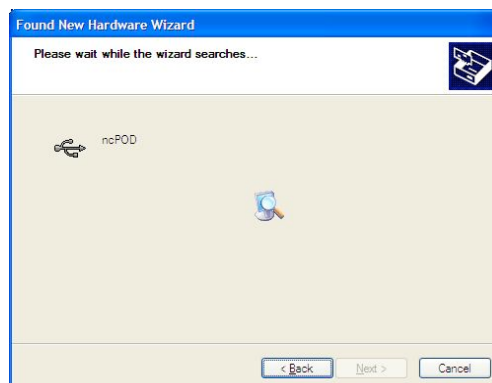
**Or**

Location from your hard drive where you saved after downloading from internet - **C:\USB Driver**

**Following picture shows CD drive E:\USB Drive as the path as an example. When you insert CD and if starts automatic installation you should cancel and then look for the USB Driver folder.**

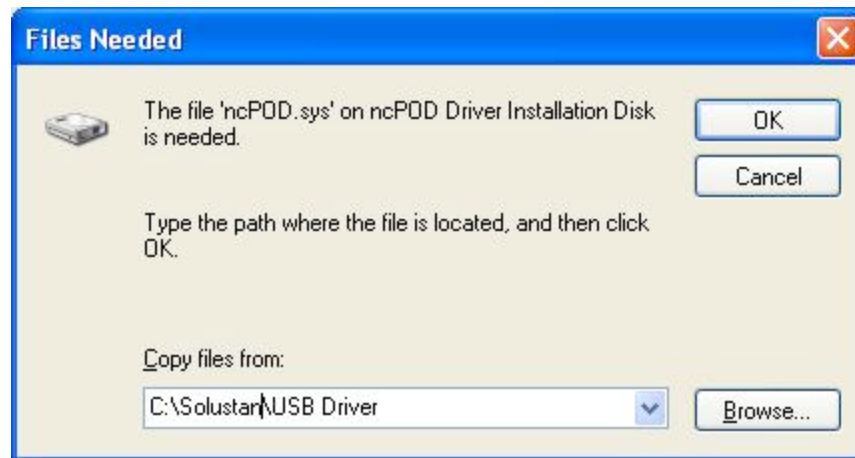


**(4) Now click on the Next button. You should see the screen from below searching for the ncPOD driver.**

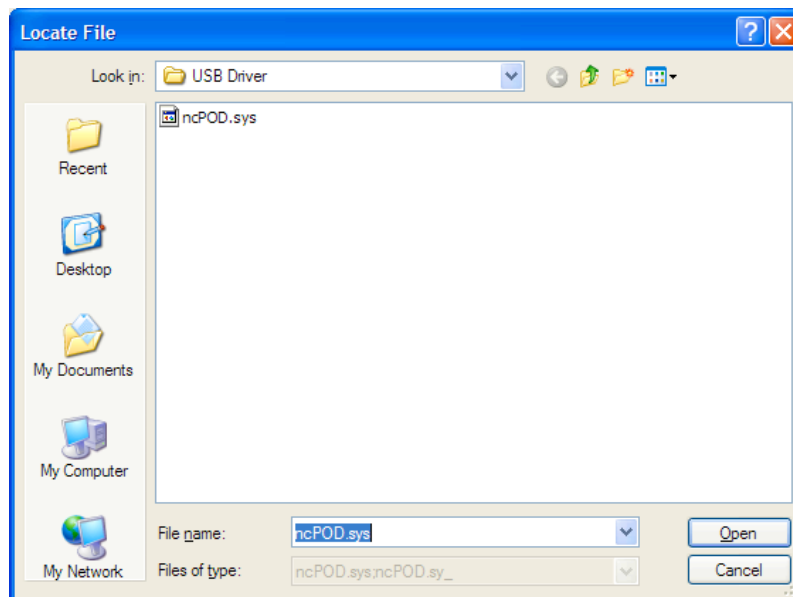


(5) When it is searching for the ncPOD driver it could again show you the following screen and depending on your installation from either the **C hard drive or D or E CD drive** you can select the same path using the **Browse button** as you did earlier.

Following picture shows CD drive **C:\USB Drive** as the path as an example.

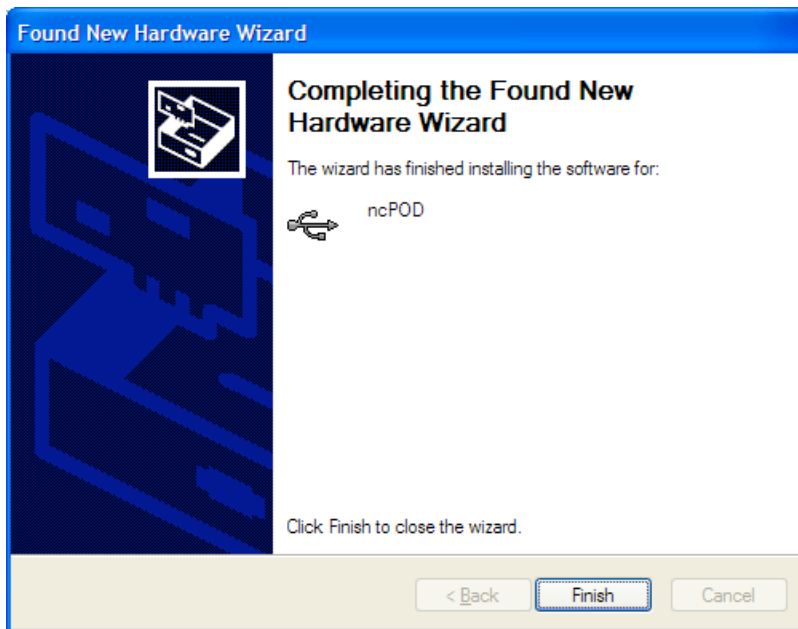


(6) After selecting the proper path Click on the **OK** button. It will show you the file name ncPOD.sys.



(7) Once you select this file and click on the **Open** button it should finish the rest of the installation for the driver. After the installation is done you will see the screen from below and here **click on the Finish**

**button.** It will show you a message that **new hardware is installed and recognized by the windows.** You are all set with the proper ncPod driver installation.



**(8) Remember to plug in the SD memory card into the USB Controller card.** Approximately 1minute of machine work uses 1MB of memory. This controller supports up to 2GB Memory. **Do not use SDHC memory.**

**If you are installing for the first time you do not need to worry about next step 9 for updating the firmware. We ship all USB controller boards with latest firmware. Simply go to the next page and start installation procedure for LinkMotion driver software.**

**(9) Firmware update for USB controller board:**

**This procedure may be necessary only when we send you an updated firmware or updated LinkMotion driver software to work with latest firmware properly.**

Firmware update requires USB controller board connected to the computer. Double click on the utility name **ncPODUpdater 2034.exe** or with the latest number that we have provided. Click on the **big button Update ncPOD Firmware [2034]**. This will take a few seconds and when it is done updating it will give you a message **Update Successful**. Click on the **OK** button. You are done with the firmware update.

You may need to disconnect and connect back the USB cable from the computer end one time.

If you are simply updating the USB controller board firmware or updating the LinkMotion driver version then you will simply need to exit the LinkMotion applet by right mouse click and Re-Launch it from the Start menu and start working with it again.

**Make sure and understand the LinkMotion driver features and then start working with your machine.**

## **Warning for USB Controller board:**

**It is very important not to plug the cable from this USB controller board to any USB hub or extension devices. Always plug this directly into your computer's USB 2.0 connection. This USB controller does not work with USB1.1 connections. If you connect other USB devices that require 1.1 connections it can cause problem and you need to make sure and not use those devices. Always check compatibility for wireless USB devices. Power saver and Screen Saver mode on your computer should be turned off. This can cause problems in recognizing the USB connection on a continuous basis. If the USB controller board is powered by the PC's USB port power supply it may be necessary to unplug and plug it back again the USB cable every time you turn on the computer before you launch LinkMotion for USB.**

Approximately 1minute of machine work uses 1MB of memory. This controller supports up to 1GB Memory. **Do not use SDHC memory.**

## **USB Controller Board Lights:**

There are three LED lights on the USB Controller board Blue and Amber. These lights behave in the following manner:

Blue LED Flashing Slowly – No USB Connection

**Blue LED Steady – USB powered up and ready**

Amber LED Flashing Slowly – Waiting for firmware update

Amber LED Flashing Fast – No SD (Memory) card

**Amber LED Steady – USB ready with SD card**

Red LED – Turns on when board is powered. It turns off when it makes proper connection with LinkMotion. It should turn on every time when any machine motion is detected.